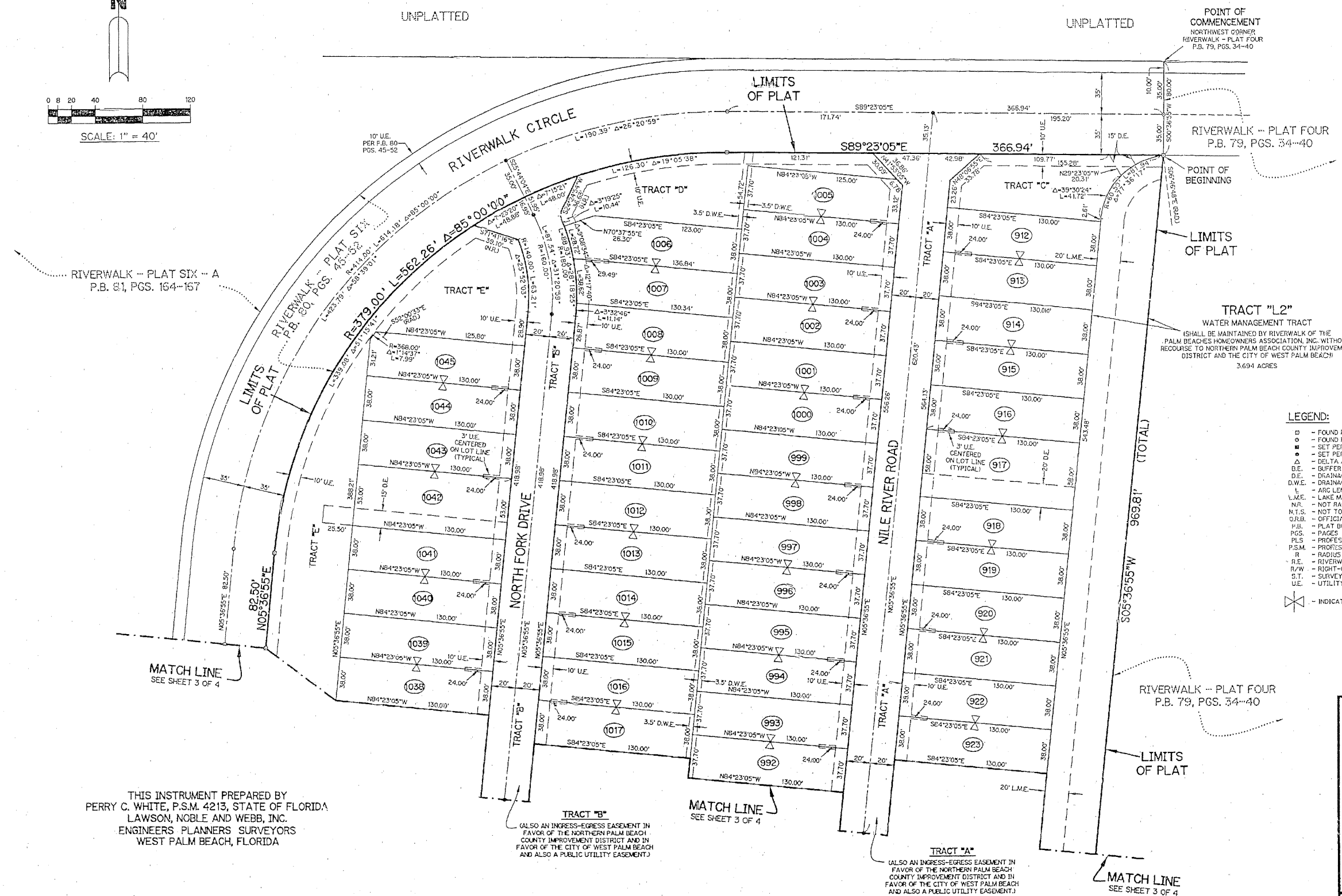
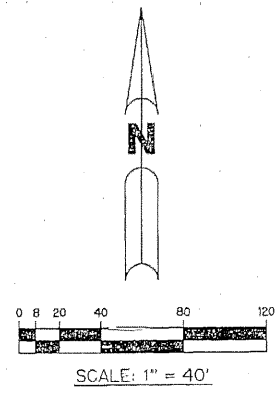


RIVERWALK - PLAT NINE

A PARCEL OF LAND LYING IN SECTION 21, TOWNSHIP 43 SOUTH,
RANGE 42 EAST, CITY OF WEST PALM BEACH,
PALM BEACH COUNTY, FLORIDA.

SHEET 2 OF 4 DECEMBER, 1997



RIVERWALK - PLAT SIX - A
P.B. 81, PGS. 164-167

MATCH LINE
SEE SHEET 3 OF 4

THIS INSTRUMENT PREPARED BY
PERRY C. WHITE, P.S.M. 4213, STATE OF FLORIDA
LAWSON, NOBLE AND WEBB, INC.
ENGINEERS, PLANNERS SURVEYORS
WEST PALM BEACH, FLORIDA

TRACT "B"
(ALSO AN INGRESS-EGRESS EASEMENT IN
FAVOR OF THE NORTHERN PALM BEACH
COUNTY IMPROVEMENT DISTRICT AND IN
FAVOR OF THE CITY OF WEST PALM BEACH
AND ALSO A PUBLIC UTILITY EASEMENT.)

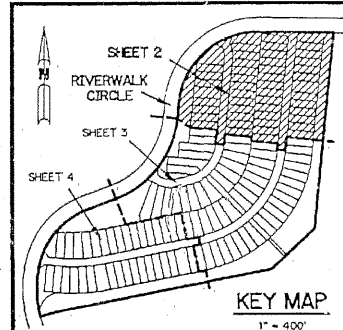
MATCH LINE
SEE SHEET 3 OF 4

TRACT "A"
(ALSO AN INGRESS-EGRESS EASEMENT IN
FAVOR OF THE NORTHERN PALM BEACH
COUNTY IMPROVEMENT DISTRICT AND IN
FAVOR OF THE CITY OF WEST PALM BEACH
AND ALSO A PUBLIC UTILITY EASEMENT.)

RIVERWALK - PLAT FOUR
P.B. 79, PGS. 34-40

MATCH LINE
SEE SHEET 3 OF 4

- LEGEND:**
- - FOUND PERMANENT REFERENCE MONUMENT, PLS #4213
 - - FOUND PERMANENT CONTROL POINT, PLS #4213
 - - SET PERMANENT REFERENCE MONUMENT, PLS #4213
 - - SET PERMANENT CONTROL POINT, PLS #4213
 - Δ - DELTA ANGLE
 - D.E. - BUFFER EASEMENT
 - D.E. - DRAINAGE EASEMENT
 - D.W.E. - DRAINAGE WALL & LANDSCAPE EASEMENT
 - L - ARC LENGTH
 - L.M.E. - LAKE MAINTENANCE EASEMENT
 - N/A - NOT RADIAL
 - N.T.S. - NOT TO SCALE
 - O.R.B. - OFFICIAL RECORD BOOK
 - P.B. - PLAT BOOK
 - PGS. - PAGES
 - PLS - PROFESSIONAL LAND SURVEYOR
 - P.S.M. - PROFESSIONAL SURVEYOR AND MAPPER
 - R - RADIUS
 - R.E. - RIVERWALK EASEMENT
 - R/W - RIGHT-OF-WAY
 - S.T. - SURVEY TIE
 - U.E. - UTILITY EASEMENT
 - ⊗ - INDICATES COMMON BUILDING LINE



A209.RW9 SHEET 2 OF 4